



36 Green Street
 Elmhurst 3469
 P (03) 5355 5000
 F (03) 5354 8218
 Email ebnc@ebnc.org.au
www.ebnc.org.au

ANNUAL REPORT 2014 - 2015



PHOTOS



Those very special people our volunteers. Are volunteers are appreciated by clients and our staff. It is recognized by the staff and Board of Management of EBNC that volunteers are a valued team member of the Centre. The skills and experience they bring to this role contribute greatly to the quality of life of clients of the Elmhurst Bush Nursing Centre.

Many of the programs and functions of the Centre would be impossible to maintain without the generous support of our volunteers.



Ararat Rural City Council provides a weekly Library Outreach Service to Elmhurst, this is provided by the Ararat Regional Library and is available on Mondays from 10.30 am to 12.15 pm, in the meeting room.

This service coincides with the finishing times of the two strength training exercise groups run at the Centre.

All Central Highlands Library patrons, are able to use this service, and new library patrons can be registered and are always welcome.

There is range of items available to borrow for all ages including small and large print popular fiction and non-fiction books, audio books, DVDs, magazines and children’s books.

Library users can also order and renew items through this service, and can access the Central Highlands Libraries website to place orders to be available for collection via this service. For library patrons unfamiliar with the libraries website, instruction is available on the public computer at the centre.

The Outreach Library service has proven to be a community gathering point on Monday mornings and has become a weekly social outing for many library users. It provides an environment where newcomers to Elmhurst along with long term locals have the opportunity for conversation and connection.

This service has proven to be a great success.

Farewell Sue Mahony



Sue Mahony has been associated with the Elmhurst Bush Nursing Centre for the past 16 years, in her role as the planned activity group co-ordinator. This group was formerly known as the Saturday Centre

however it is now affectionately referred to as Whacky Wednesday.

During her employment Sue worked tirelessly with the community and volunteers to coordinate and deliver a program for the older population. She was dedicated and extremely aware of meeting the group’s needs. Sue willingly adapted to changes as the program involved and actively contributed to its success.

Our Members

Historically, Bush Nursing Centre’s have held a unique status within the Community, with most locals being members of their association. The Elmhurst Bush Nursing Centre membership base supports the ongoing provision of services to the community and continues to remain steady. Membership for 2014 / 2015 is 331 members. Membership categories consist of Family and Single.

administrator

Life Members

Mr. John Cocking

Mr. John Greene



| | |
|--------------------------|---------|
| Strategic Plan | Page 1 |
| Organisational Chart | Page 2 |
| Board of Management | Page 3 |
| Presidents report | Page 4 |
| Centre Managers Report | Page 5 |
| Staff | Page 6 |
| Partnerships | Page 7 |
| Partnerships & Alliances | Page 8 |
| Finance report | Page 9 |
| Finance report | Page 10 |
| Clinical nursing report | Page 11 |
| Clinical nursing report | Page 12 |
| Planned Activity Group | Page 13 |
| Planned Activity Group | Page 14 |
| Our Community | Page 15 |
| Photos | Page 16 |

VISION

To provide communities with services which promote health and wellbeing

VALUES

BEST PRACTICE

We value and promote quality services using evidence based practice

WORKING TOGETHER

We value effective communication with all individuals and organisations

CHOICE

We value providing information and options to allow informed decision making

PEOPLE FOCUSED

We value providing services which are respectful and responsive to individuals and groups

STRATEGIC THEMES

INCLUSION

Broaden our reach for meeting our communities health and wellbeing needs

COLLABORATION

Successfully collaborate with our staff, members, stakeholders and communities

SUSTAINABILITY

Ensure robust business models for the long term viability of our service

STRATEGIC DIRECTIONS

2014—2015

1

1 Ensure inclusive and accessible services

2 Broaden scope for service provision

3 Ensure sustainability through strategic collaborations and sponsors

4 Create a financially sustainable business model

5 Introduce innovative governance practices

Planned Activity Group



Taking a Break

January



Getting to know you

13 Participants 2 Volunteers

Valentines Day

10 Participants 2 Volunteers

February



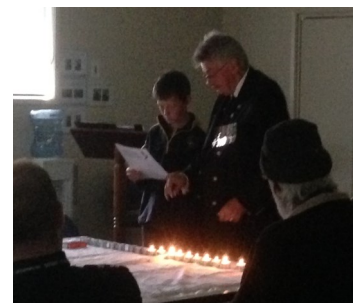
Swinging 60's in Avoca

14 Participants 3 Volunteers

St Patricks Day

10 Participants 2 Volunteers

March



Shopping in Beaufort

10 Participants 2 Volunteers

Anzac Day

12 Participants 2 Volunteers

April



Mothers Day

7 Participants 2 Volunteers

Admiring Maryborough

12 Participants 2 Volunteers

May



All things Royal

12 Participants 2 Volunteers

What's the smell

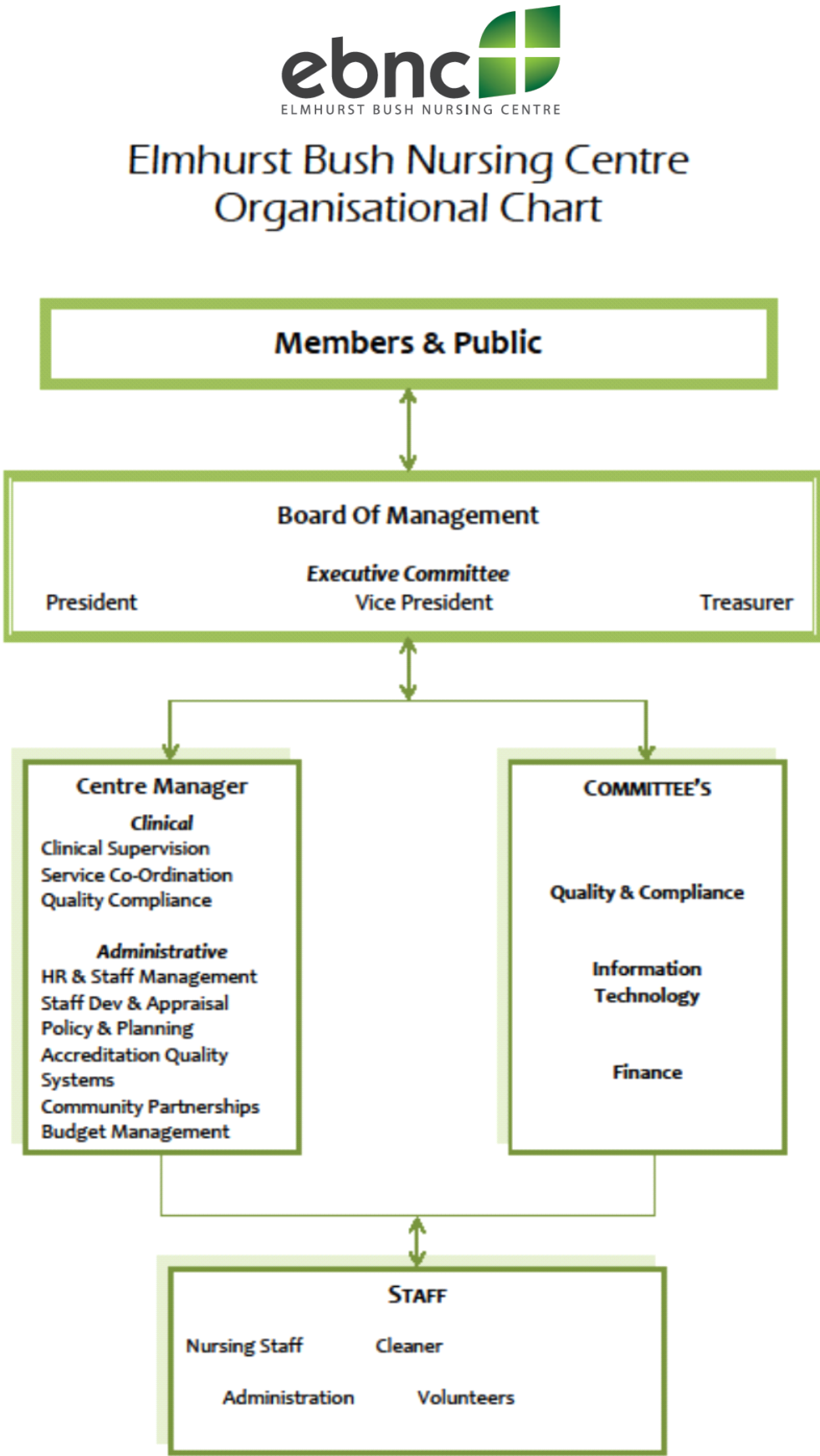
7 Participants 3 Volunteers

June

2014—2015

14

| | | |
|-----------|---|---|
| July | Direct 2 Care 9 Participants 3 Volunteers |  |
| August | Visit to the local 15 Participants 2 Volunteers |  |
| | Arts & Crafts 9 Participants 2 Volunteers | |
| September | Fathers Day 9 Participants 2 Volunteers |  |
| | Lunch at Landsborough 17 Participants 3 Volunteers | |
| October | Time flies when you're having fun 9 Participants 2 Volunteers |  |
| November | Visit from Stroke Foundation 15 Participants 3 Volunteers |  |
| | Trip to Wardlin Gallery 9 Participants 2 Volunteers | |
| December | Christmas Party 30 Participants |  |





Mario Santilli
President
Mario is the Director of Development and Improvement at East Grampians Health Service. He has over 30 years experience in working in the health sector and has developed strategic and operational skills in Quality and Risk management.



Alison Greene
Board of Management
A Board member since 2007, Alison is a teacher currently employed with the Department of Education & Training in Early Childhood Intervention Services, working with young children with disabilities and their families.



Peta Barrie
Vice President
Peta is a Primary Care Consultant at Western Primary Health Care Network. A member of the BOM since 2013 her passion is ensuring that everyone, regardless of race or background, has access to healthcare.



Michael Roberts
Board of Management
A local farmer and wool classer Michael has been on the Board for two years. He is a member of the Quality & Compliance Committee and spends many hours volunteering his services for maintenance & repairs at the centre.



Graeme Ferguson
Treasurer
Graeme has been a member of the EBNC Board of Management since November 2014, and as a Chartered Accountant for over 33 years has acquired a wealth of experience in the accounting and financial industry.



Kristy Price
Board Of Management
Kristy has been a member of the Board since 2013 and held the position of Treasurer prior to Graeme. Kristy is also a representative on the IT and Finance Committees.

Amanda Harrison
Board of Management



**Advocacy
& Support**
1607

**Vital Sign
assessments**
910

Immunisations
70

**Health
Promotion**
292

**Wound Care
assessments**
212

**Pathology
clients**
60

Support GP
**503
occasions**

**Assistance Goal
directed care
planning**
30

**Collaboration &
co-ordination
for individuals**
155

GP Visits
503

**Allied Health
Professional**
200

**Medication
administration /
supply &
education**
111

Elmhurst Bush Nursing Centre continues to provide a quality service to the community through the hard work and dedication of the EBNC team. The beginning of the new financial year was met with challenges and EBNC experienced a period of change in management, leadership and staff structure. With the direction and support of the Board of Management the centre remained open with minimal disruption to service delivery. Successful recruitment to our vacant positions occurred end of 2014 beginning of 2015.

Advocacy and support to both members and non-members has been the intervention we have delivered the most for 2014-2015 followed by patient assessment then the support we provide to our visiting GP's. Productivity throughout the year has remained relatively consistent however the last six months of the year has seen a 25% rise in the number of wound assessments performed and a 50% rise in medication administration and supply. Data collected from our software program, Uniti, reveals that the majority of our health service delivery occurs at the centre – this is gratifying as it demonstrates the work we have been doing to implement an Active Service Model approach to increase the community's capacity for taking control of their health needs – community members are becoming more proactive and seeking help at the right place and at the right time.

Staff education and training continues to be a priority for Elmhurst Bush Nursing Centre. In 2015 3 out of 4 of the permanent nursing staff successfully completed the Remote Area Nursing (RAN) training which is delivered by Ambulance Victoria. We have also begun what we hope to be a long lasting relationship with the Western Primary Health Care Network by accessing education and support and continue our positive relationship with East Grampians Health Service. The EBNC team have also been able to consolidate clinical skills by working with Grampians Post Acute Care and Hospital in the Home programs from Ballarat and Ararat.

We look forward to the coming years where we can provide the community with healthcare that can be accessed locally, delivers a high standard and remains equitable for all.



Mario Santilli
President

It is with pleasure that I present the 2014/15 Annual report on behalf of the Elmhurst Bush Nursing Centre Board of Management, staff and volunteers.

This has been a year in which we have seen strengthening of relationships with our community and with other health care providers. The Board of Management and staff have worked together to promote the centre as a place where the members and the community can feel welcomed and supported.

In this year we received news from the Department of Health and Human Services that our funding will be assured into the future. This provides certainty of sustainability for the Centre and the community. We should look forward to continuing to build the Centre into a hub for the community.

It was with some sadness that we farewelled Sue Young after 9 year as the Centre Manager. The Board of Management and the staff recognise the contribution that Sue made to the centre and the Elmhurst community. It was with pleasure that The Board of Management appointed Alison Oliver to the position of Centre Manager we are confident that Alison will provide a strong focus and direction for the centre.

The Board of Management are particularly proud of the following achievements made in the past year:

- + Strong focus on achieving goals determined by the Strategic Plan.
- + Practiced the principles of consumer engagement.
- + Encouraged and supported diverse partnerships with Board of Management, staff and Community.
- + Addressed issues as raised by Community in Annual Community Survey.
- + Participated in local Community events.

I thank departing Board members Kristy Price and Amanda Harrison for their contribution and support to me, the Centre and to the community.

The Board would also like to acknowledge the amazing work that is provided to the community by the staff, volunteers and health partners. The dedication and service is appreciated by all in the community.

On behalf of the Staff and Volunteers at Elmhurst Bush Nursing Centre I am delighted to present the 2014/2015 Centre Manager’s Report. The report reflects on the achievements, changes and challenges over the past year as well as our priorities and vision for the future.

There are many aspects that contribute to an individual’s health and well-being and through the commitment of the Elmhurst Bush Nursing Centre Team our aim is to make a positive contribution. I am proud to be part of a team who continue to provide a safe and supportive environment which enhances social networks and services, encourages respectful relationships and facilitates community participation. As a health service we understand our key role in promoting and supporting the health and well-being of our community.

Elmhurst Bush Nursing Centre’s Strategic Plan has guided our work and we have been able to consistently integrate the main themes; Inclusion, Collaboration and Sustainability, in to our daily practice.

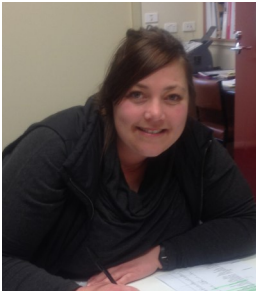
We have broadened our reach for meeting the community’s needs by extending our service delivery areas and providing staff education and training. We have strengthened our collaborative approach to health and well-being through positive partnerships. EBNC has been the recipient of new equipment thanks to donations from Members, Ararat Ambulance Victoria Auxiliary as well as local businesses and corporate organisations. And from the direction of our Board of Management we have ensured robust business models for long term sustainability.

Pursuing our strategic plan has been possible with the hardwork and dedication of our staff. There has been the introduction of new staff to the EBNC Team who have brought with them a wealth of experience and knowledge.

Along with EBNC’s staff, I must mention the tireless efforts of our Volunteers who graciously donate their time. The Elmhurst Bush Nursing Centre would not be where it is today without the expertise of our staff and volunteers.

I have been very fortunate to have the support of dedicated and professional people around me and together we look forward to providing a high standard of health care.

I would like to take this opportunity to acknowledge the unwavering support from our members, stakeholders and the wider community. Consistent community engagement at the level we experience will help strengthen and sustain our health service delivery. It will go a long way to reducing health inequities experienced by rural populations and improving the health and well-being of the community.



Alison Oliver
Centre Manager

ELMHURST BUSH NURSING CENTRE INCORPORATED
STATEMENT OF CASHFLOWS
FOR THE YEAR ENDED 30 JUNE 2015

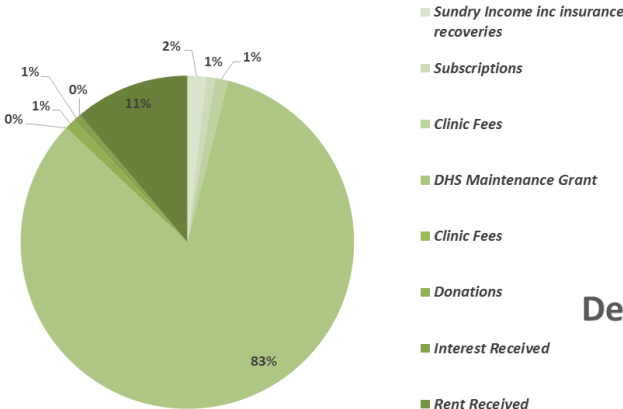
| | 2015 \$ | 2014 \$ |
|---|------------|------------|
| Cashflows from Operating activities | | |
| Receipts from Customers | 330,272 | 317,752 |
| Payments to Suppliers and Employees | (386,309) | (267,494) |
| Interest Received | 2,047 | 5,245 |
| Cash flows provided by operating activities | (53,990) | 55,503 |
| Cash flows from Investing activities | | |
| Payments for Property, Plant & Equipment | (37,802) | (5,170) |
| | (37,802) | (5,170) |
| Net Increase in Cash Held | (91,792) | 50,333 |
| Cash held at the beginning of the year | 211,412 | 161,079 |
| Cash held at the end of the year | 119,620 | 211,412 |

The financial report has been prepared on an accruals basis and is based on historic costs and does not take into account changing money values or, except where stated specifically, current valuations of non-current assets.

The Association has a tax exempt status.

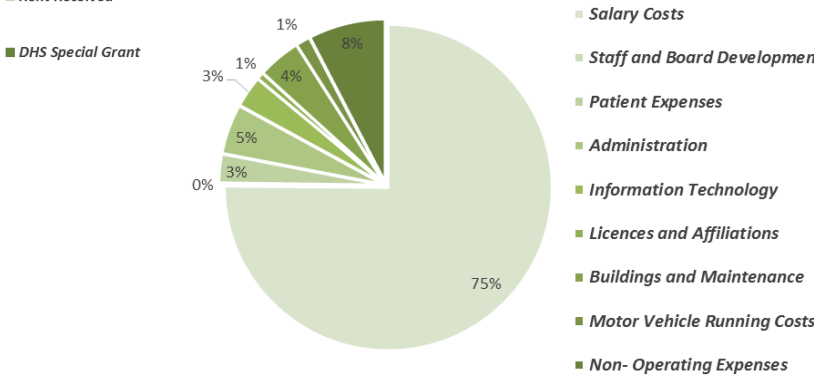
The revenue is accounted for on an accrual basis when it is earned.

Detailed Income Statement
- Revenue



Land and Buildings were re-valued during the year in line with the Capital Improved Value as indicated on the rates notice provided by Ararat Rural City Council.

Detailed Income statement
- Expenses

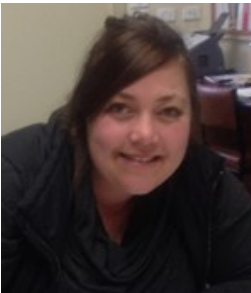


| ELMHURST BUSH NURSING CENTRE INCORPORATED INCOME AND EXPENDITURE STATEMENT FOR THE YEAR ENDED 30 JUNE 2015 | | |
|--|-----------|-----------|
| | 2015 | 2014 |
| | \$ | \$ |
| Revenues from Ordinary Activities | 356,630 | 318,675 |
| Salary and Wage Expenditure | (272,950) | (242,767) |
| Depreciation Expenses | (53,075) | (56,249) |
| Other Expenditure from Operations | (67,384) | (106,309) |
| Net Profit from Ordinary Activities | (36,779) | (86,650) |

Information in this report has been extracted from the audited financial statements as completed by RSM Bird Cameron, 12 Anderson Street, Ballarat

Depreciation of \$53,075.00 was charged during the financial year. After adding back the depreciation charge a net surplus would have existed of \$ 16,296.00 to the organisation.

| ELMHURST BUSH NURSING CENTRE INCORPORATED ASSETS AND LIABILITIES AS AT 30 JUNE 2015 | | |
|--|---------|-----------|
| | 2015 | 2014 |
| | \$ | \$ |
| CURRENT ASSETS | | |
| <u>Cash and cash equivalents</u> | 66,273 | 159,303 |
| Receivables | 1,291 | 5,460 |
| Investments | 53,347 | 52,109 |
| Total Current Assets | 120,911 | 216,872 |
| NON-CURRENT ASSETS | | |
| Property, Plant and Equipment | 812,915 | 828,188 |
| Total Non-Current Assets | 812,915 | 828,188 |
| Total Assets | 933,826 | 1,045,060 |
| CURRENT LIABILITIES | | |
| Grants in Advance | 11,146 | 39,626 |
| Tax Liabilities | 9,223 | 12,937 |
| Short Term Provision | 23,016 | 23,392 |
| Total Current Liabilities | 43,385 | 75,955 |
| NON CURRENT LIABILITIES | | |
| Long Term Provision | 7,978 | 49,863 |
| Total Non Current Liabilities | 7,978 | 49,863 |
| Total Liabilities | 51,363 | 125,818 |
| Net Assets | 882,463 | 919,242 |
| MEMBERS' FUNDS | | |
| Retained Profits | 882,463 | 919,242 |
| Total Members' Funds | 882,463 | 919,242 |



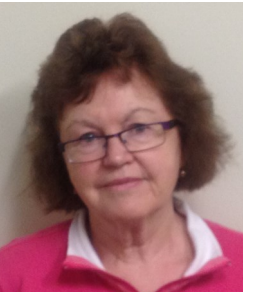
Alison Oliver
Centre Manager
RAN



Kathie Vines
PAG Co-ordinator



Janine Curtis
Registered Nurse
RAN



Sue Mahony
PAG Co-ordinator
until 2015



Kerry Cattnach
Registered Nurse
RAN



Carol Murray
Environmental Services



Sue Andrews
Registered Nurse



Mandy Preston
Business Manager

“Alone we can do so little; together we
can do so much”
- Helen Keller

Elmhurst Bush Nursing Centre has fostered and expanded partnerships with other organisations to ensure the best possible outcomes for our community. We have developed and drawn on our relationships with government and non-government organisations to be able to better respond to identified community needs.

Such partnerships are aimed at providing strong robust systems using a coordinated approach that strengthens our capacity to ensure our members can remain independently in their own environment for as long as possible.

These partnerships include:

Regular visiting services from East Grampians Health Services:

- Physiotherapist
- Strength training classes
- Dietician
- Occupational therapist
- Podiatrist
- Hospital Admissions Risk Program Co-ordinator
- Diabetic Educator

Ararat Medical Centre

- Weekly GP visits –
- Dr. Michael Connellan
 - Dr. Pieter Pretorius

Ararat Rural City Council

- Maternal & Child Health Nurse
- Home & Community Care Support
- Library



Dr. Michael Connellan



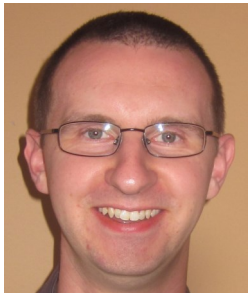
Caroline Hamilton
Physiotherapist



Kim
Strength Training
Co-Ordinator



Therese Arnott
Maternal & Child Health



Duncan Harvey
Podiatrist



Dr. Pieter Pretorius



Jo Kaye
Physiotherapist



Jill Turnock
HARP Co-ordinator



Sarah Keith
Library



Julie Lang
Diabetes Educator



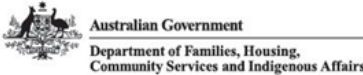
Georgie Davenport
Dietician

Partnerships and Alliances

Department of Health & Human Services (DHHS)
Leading Age Service Australia (LASA)
East Grampians Health Services (EGHS)
Ararat Medical Centre
Grampians Pyrenees Primary Care Partnership (GPPCP)
Ararat Rural City Council
Pyrenees Shire Offices
Grampians Post Acute Care
Dulkeith Computer Solutions
Ambulance Victoria
Australian Nursing & Midwifery Federation (ANMF)
Service Industry Advisory Group (SIAG)
UNITI (Information Technology)
Country Fire Authority
Victorian Healthcare Association
Western District Health Service

Auditors

The Auditor of the Elmhurst Bush Nursing Centre Inc. for the 2014 / 2015 financial year was
Mrs. Sandra Campbell, RSM Bird Cameron, Ballarat.



Ararat Rural City

